

HHS

Hand Held Scanner

Technical Support

Technician Edition

Aladdin Firmware & Bootloader Upgrade for MUSEO Platform
v2.01 / Robert Wahnsiedler

Firmware & Bootloader Upgrade

In the first step the *Aladdin Developer Mode* must be enabled. This will allow you to upgrade the bootloader!

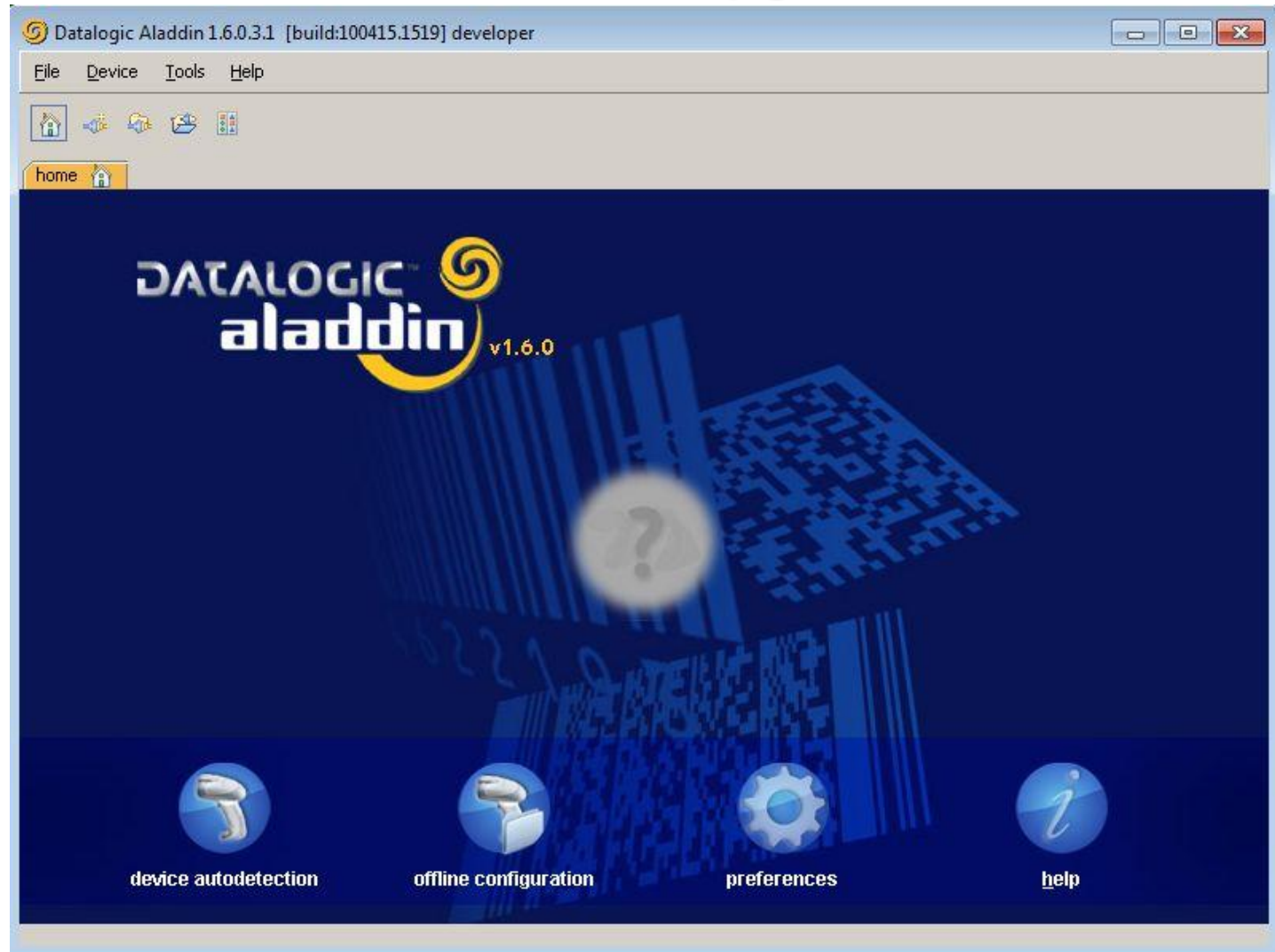
But take care, if the bootloader will be destroyed, the device can not be recovered.
This mean: **Do not disconnect the device during the download phase!**

How to enable the *Aladdin Developer Mode*:

- Right click on the Aladdin shortcut (desktop)
- Select properties
- Look for **Target**
“C:\Program Files\Datalogic\Aladdin\aladdin.exe”
- Change to
“C:\Program Files\Datalogic\Aladdin\aladdin.exe” +d

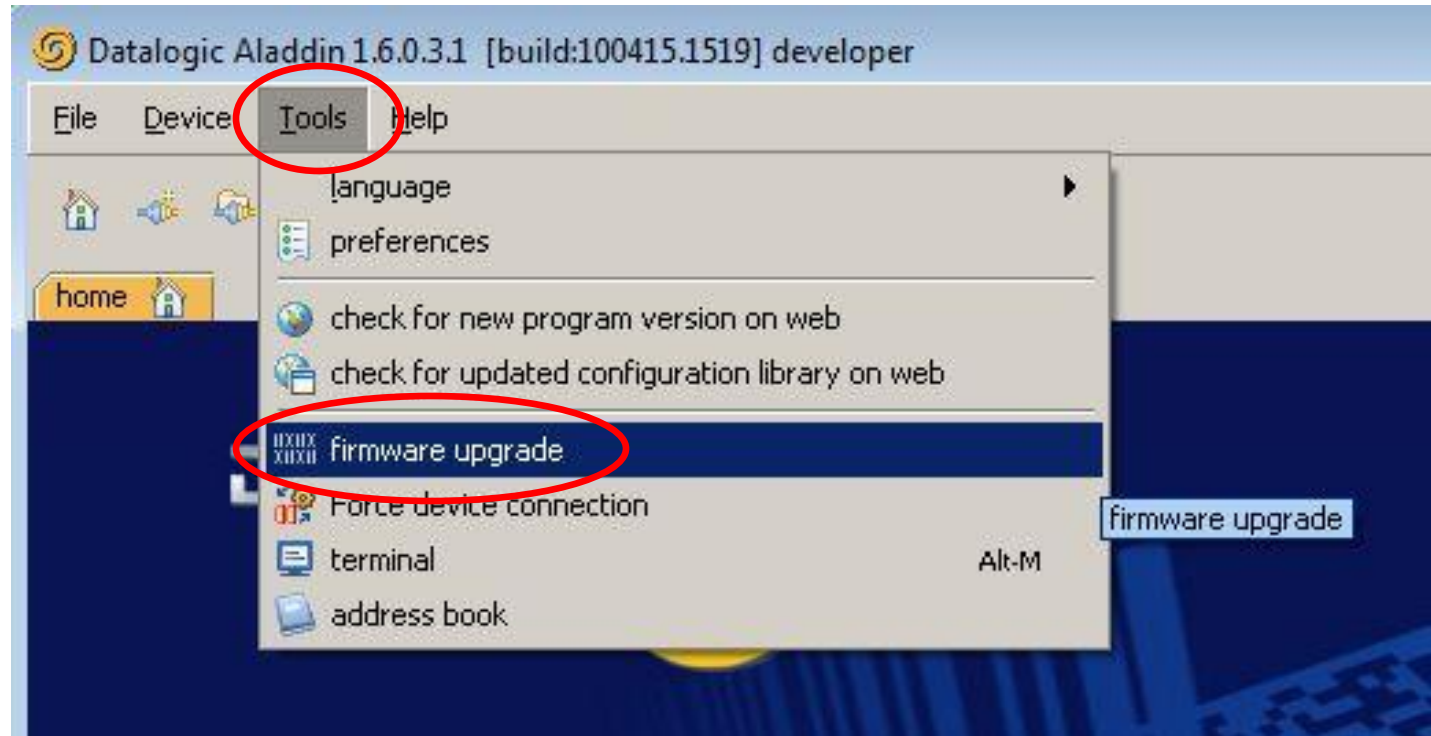
Firmware & Bootloader Upgrade

To do a firmware upgrade, there is no need to connect the device to Aladdin!



Firmware & Bootloader Upgrade

Please open **Tools** in the Aladdin menu and select **firmware upgrade**.



Firmware & Bootloader Upgrade

In this new windows you have to load the firmware that you want to flash. Please click on **load firmware file**.

firmware upgrade

load firmware file

device: -

sw release: -

boot version: -

pid: -

check pid: ☒

upgrade application: ☒

upgrade boot: ☐

RS232 connection: select connection ▼

☐ Firmware upgrade with a **USB cable**

☐ Firmware upgrade with a **RS232 device with an RS232 cable**

☐ Firmware upgrade with a **non-RS232 device with an RS232 cable**

Cancel

Firmware & Bootloader Upgrade

On the right side you can find shortcuts for different destinations on your computer.

In the “Config Repository” folder you will find all firmware releases that come with Aladdin.

If you get a new package you can unpack it to the following folder to make it available to Aladdin:

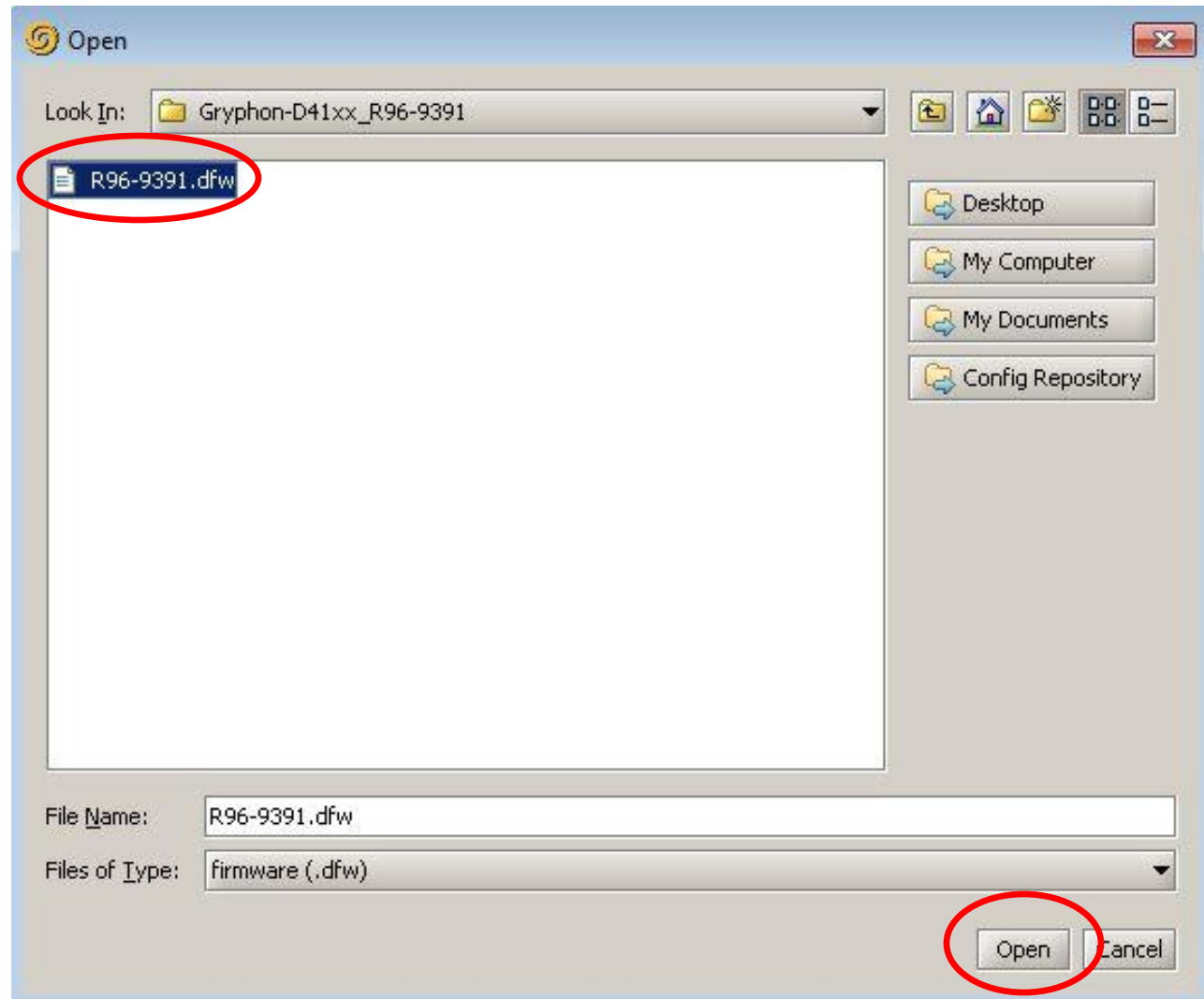
C:\Program Files\Datalogic\Aladdin\resource\ConfigRepository\...

Select now your device and open the folder with the firmware.



Firmware & Bootloader Upgrade

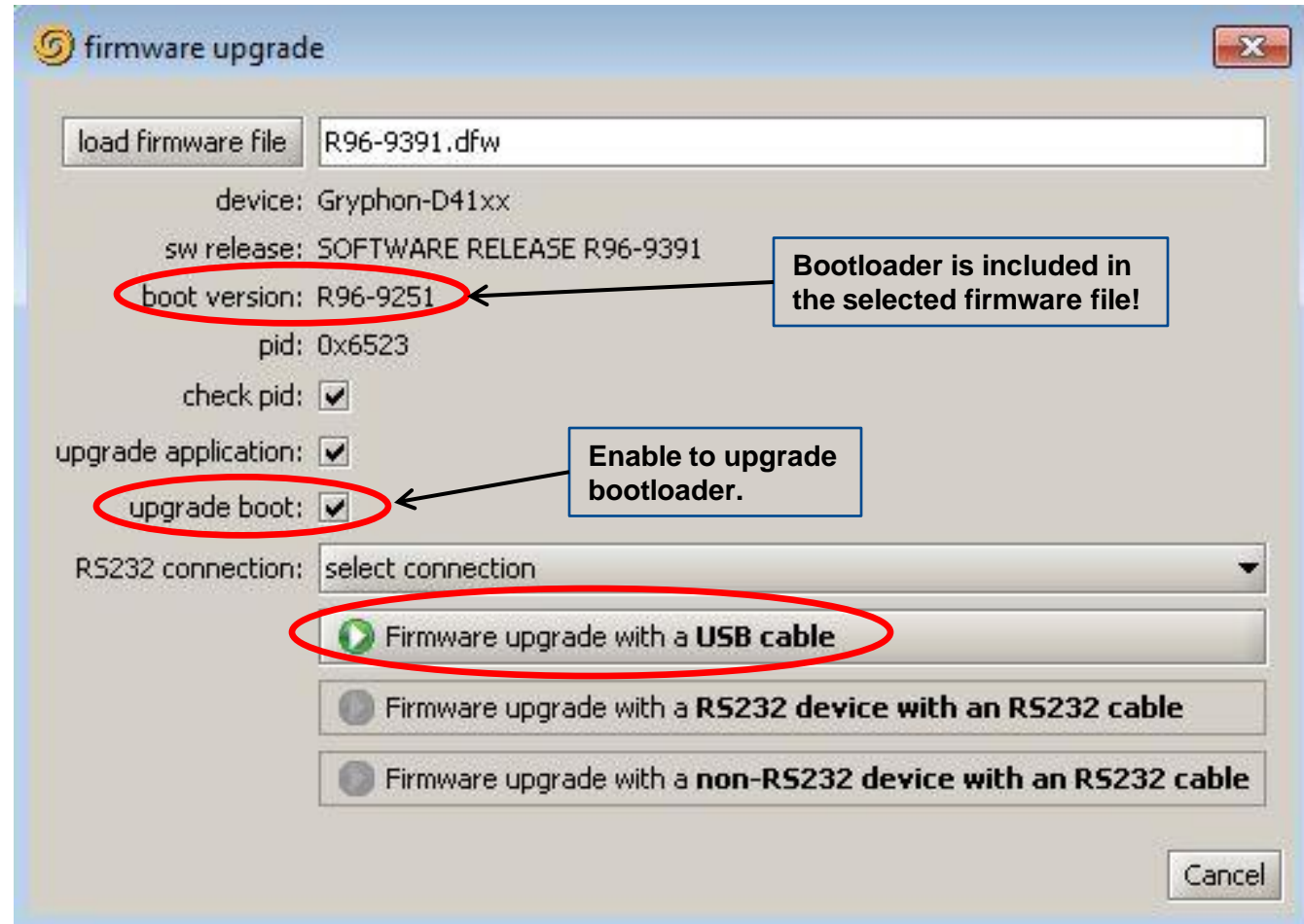
Inside the folder you will find a *.dfw file, which is the file that can be flashed. Select it and press **Open**.



Firmware & Bootloader Upgrade

If your device is connected through USB, press **Firmware upgrade with a USB cable.**

If your device is connected through RS232, please click > [here](#) < or go to the end of this presentation.



Firmware & Bootloader Upgrade



You will get now the message above.

For a corded scanner

(e.g. QuickScan QD2130, Gryphon GD4130):

Please disconnect USB cable, press button on the scanner and keep it pressed, reconnect USB cable. You can release the button after the update has started.

For a base station

(e.g. Gryphon BC4030):

Please disconnect USB cable, press button on the base and keep it pressed, reconnect USB cable. You can release the trigger after the update has started.

For a mobile scanner

(e.g. Gryphon GM4130, exception PBT7100):

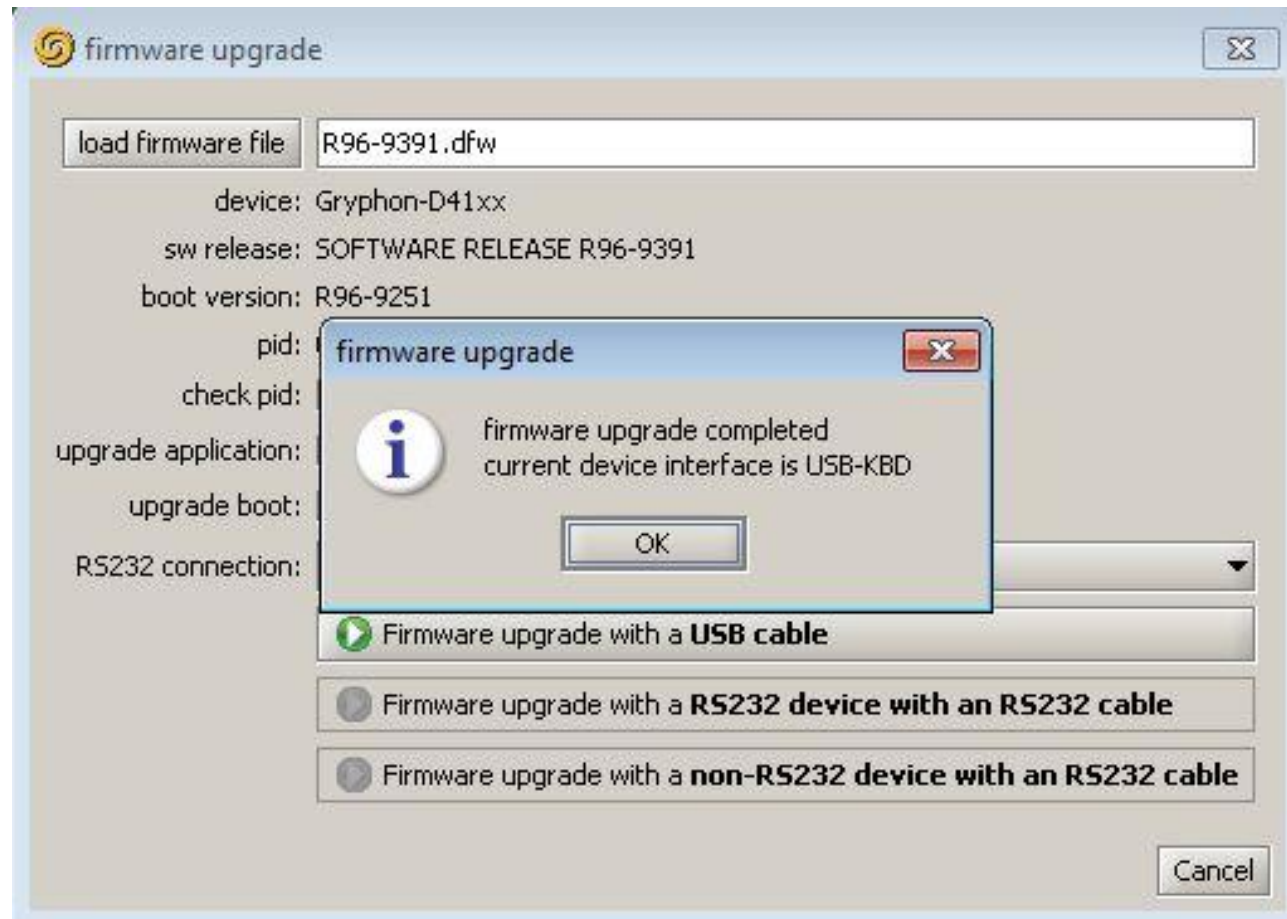
Please disconnect USB cable, press button on the base and keep it pressed, reconnect USB cable. You can release the trigger after the update has started.

Firmware & Bootloader Upgrade



You can release the button after the update has started!

Firmware & Bootloader Upgrade



After the upgrade the new default interface will be USB-KBD (keyboard) with country mode U.S.. To configure your scanner, you have to enable USB-Com or RS232 interface!

Firmware Upgrade done!

Firmware & Bootloader Upgrade RS232

If your device is connected through RS232, you can now select your COM-Port.

The image shows two screenshots of a 'firmware upgrade' dialog box. The top screenshot shows the main configuration screen with the 'load firmware file' set to 'R96-9391.dfw'. The device is identified as 'Gryphon-D41xx' with software release 'SOFTWARE RELEASE R96-9391', boot version 'R96-9251', and pid '0x6523'. Checkboxes for 'check pid', 'upgrade application', and 'upgrade boot' are all checked. The 'RS232 connection' dropdown is set to 'select connection' and is circled in red. Below this are three radio button options: 'Firmware upgrade with a USB cable' (selected), 'Firmware upgrade with a RS232 device with an RS232 cable', and 'Firmware upgrade with a non-RS232 device with an RS232 cable'. A 'Cancel' button is at the bottom right.

The bottom screenshot shows the 'RS232 connection' dropdown menu expanded. It lists 'select connection' twice, followed by 'COM19' and 'COM20'. 'COM20' is circled in red. Below the list is a radio button option for 'Firmware upgrade with a non-RS232 device with an RS232 cable' and a 'Cancel' button.

Firmware & Bootloader Upgrade RS232

The software upgrade for HHR Devices can be done with the Interfaces RS232 and USB. The standard tool for this is Datalogic Aladdin.

Download for cordless devices RS232:

- Start Aladdin
- Select **“firmware upgrade”** in **“Tools”**
- Open the **.dfw** file which belongs to your scanner system (it's stored in the **“config repository”** folder).
- Connect the device
- Select the COM interface
- If the download does not start automatically you will get the message **“reset the device manually please..”** -> disconnect power supply and connect it again.
- The download starts automatically, don't disconnect the device during the download phase.



BACK to
USB

Thank you!